



1 Douglas Bay Apartments King Edward Close, Onchan, Isle Of Man, IM3  
2AF

**Asking Price £295,000**





- Spacious ground floor apartment with superb sea views
- Two double bedrooms, one with en-suite
- Private balcony enjoying panoramic coastal outlook
- Gas central heating and double glazing
- Newly fitted kitchen and two bathrooms
- Allocated parking and no onward chain



## 1 Douglas Bay Apartments King Edward Close, Onchan, Isle Of Man, IM3 2AF

Apartment 1, Douglas Bay Apartments is a spacious purpose built ground floor apartment enjoying a prime coastal position with superb sea views and direct access to a private balcony. The property is offered for sale with no onward chain, making it an ideal home or investment opportunity. Over recent years the apartment has been significantly enhanced by the installation of a brand new kitchen and two new bathrooms, creating a stylish and contemporary finish throughout.

The welcoming entrance hall provides useful storage and leads into a generous lounge featuring an attractive fireplace and sliding French doors opening onto the balcony, where the stunning outlook across Douglas Bay can be fully appreciated. The newly fitted kitchen is modern and well appointed, offering an excellent range of units, integrated appliances and an efficient layout suitable for everyday living and entertaining.

There are two large double bedrooms, both well presented, with the principal bedroom benefitting from beautiful sea views and a newly installed en-suite shower room. The main bathroom has also been completely renewed and is finished to a high standard with modern fittings and a fresh, elegant design. Gas fired central heating and double glazing ensure comfort throughout the year.

Externally, the property benefits from allocated parking to the rear and the rare advantage of a balcony with uninterrupted coastal views. This impressive apartment combines generous proportions, high quality recent improvements and a highly desirable location, and viewing is strongly recommended to fully appreciate the standard of accommodation on offer.











1 Douglas Bay Apartments King Edward Close, Onchan, Isle Of Man, IM3 2AF







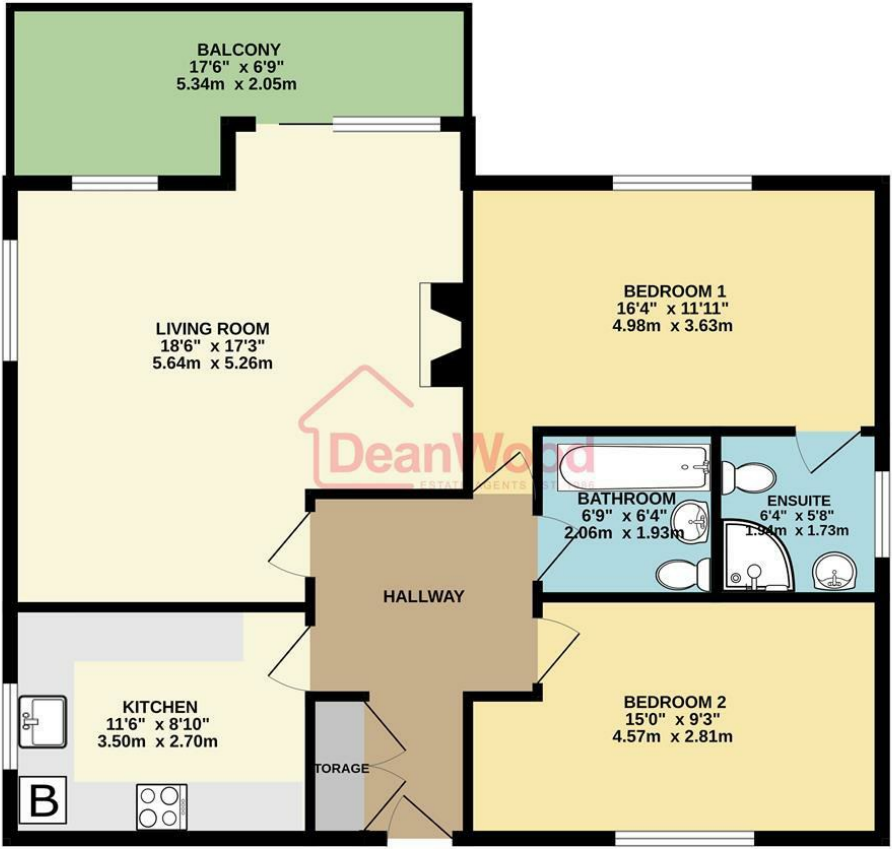




1 Douglas Bay Apartments King Edward Close, Onchan, Isle Of Man, IM3 2AF







GROUND FLOOR  
853 sq.ft. (79.2 sq.m.) approx.

TOTAL FLOOR AREA: 853 sq.ft. (79.2 sq.m.) approx.  
Not to scale-for identification purposes only  
Made with Metropix ©2026



**DOUGLAS**  
37 VICTORIA STREET  
DOUGLAS  
ISLE OF MAN IM1 2LF  
**T** 01624 620606  
**F** 01624 677363  
**E** info@deanwood.co.im

**CASTLETOWN**  
COMPTON HOUSE  
9 CASTLE STREET CASTLETOWN  
ISLE OF MAN IM9 1LF  
**T** 01624 825995  
**F** 01624 825996  
**E** castletown@deanwood.co.im

**RAMSEY**  
LEZAYRE HOUSE  
87 PARLIAMENT STREET  
RAMSEY ISLE OF MAN IM8 1AQ  
**T** 01624 816111  
**F** 01624 816588  
**E** ramsey@deanwood.co.im

These particulars are for information purposes only. They do not constitute or form any contract nor should any statement contained herein be relied upon as a representation of fact. Neither the vendor nor DeanWood Agencies Limited ('the firm'), nor any officer or employee of the firm accept liability or responsibility for any statement contained herein. The vendor does not by these particulars, nor does the firm, nor does any officer or any employee of the firm have any authority to make or give any representation or warranty whatsoever as regards the property or otherwise. It is the sole responsibility of any person interested in the property described in these particulars to make all proper enquiries and searches to verify the description of the property and all other particulars herein.

FOR MORE PROPERTIES VISIT OUR WEBSITE @ **deanwood.im**